

EZ WIRE®

 **HUSKY**
RACK & WIRE™



EZ Wire is designed to be the most secure and economical security wire partition system in the industry. With the unique patented hook fastener, installation is up to four times faster than standard bolted systems.

PATENTED HOOK FASTENER



STEP 1:
ALIGN HOOKS AND
INSERT INTO SLOTS



STEP 2:
HAMMER DRIVE PIN FOR
A SECURE CONNECTION

Value

The complete EZ WIRE system is easy to install, rearrange or expand in plant or warehouse areas and in other commercial, industrial and institutional applications. With a variety of sizes, styles and options available, the EZ WIRE non-progressive panel system is the best value in the industry.

Safe & Secure

The patented hook fastener slips in easily and locks securely into a 2-1/2" square post. Once secured, the internal clip is much more secure than a standard bolted connection, which may be accessed from the outside. The hook fastener is not visible or accessible from the outside. The diamond wire weave provides a built-in diagonal brace for added strength and security.

FEATURES

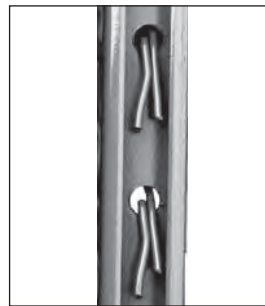


Patented hook design slips in easily and locks into place securely.

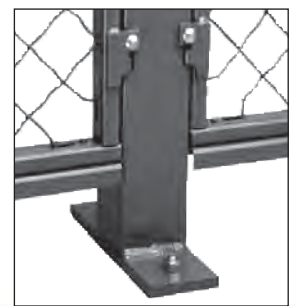
Aluminum drive pin is tapped into place for permanent installation, which can be accessed from the inside only.



Diamond Wire Weave
A 1-1/2 inch diamond wire weave is standard in each EZ Wire partition, door and window. Diagonal bracing is not needed.



Clinched Wire
All woven wire is clinched - not welded - into partition frames. This technique insures greater strength and enhanced appearance.



2-1/2" Tubular Posts
14 gauge 2-1/2" square tubular posts yield double the strength of 2" square tubing.



Ceilings

Perimeter support members are attached to the partition using self-threading screws. Ceiling panels are attached without bolts. 2-1/2" tubing is attached between rows of ceiling panels.



Corner Post

EZ Wire corner posts create smooth, 90° turns in partitioning. Partitions attach to the inside for added security.



"C" Type Frame Bars

Both sides of these frame bars have a smooth finish with no rough, unsightly welds. Hook fastener is not visible nor accessible from the outside.



Over Channel

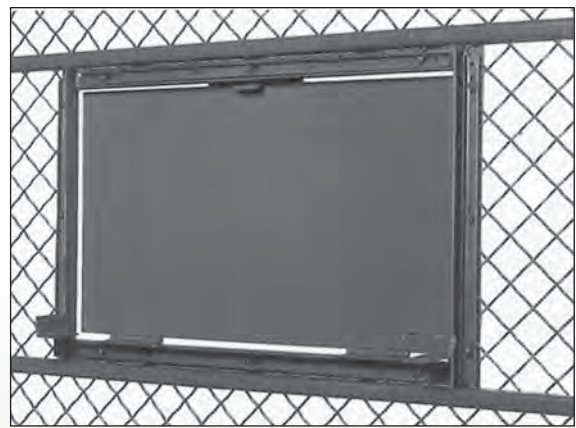
Used to securely seat together upper panels to lower panels – eliminating the need for bolting horizontally.

All windows have padlock hasps to provide additional security. Service windows are installed at Husky's factory.



Slide Up Window

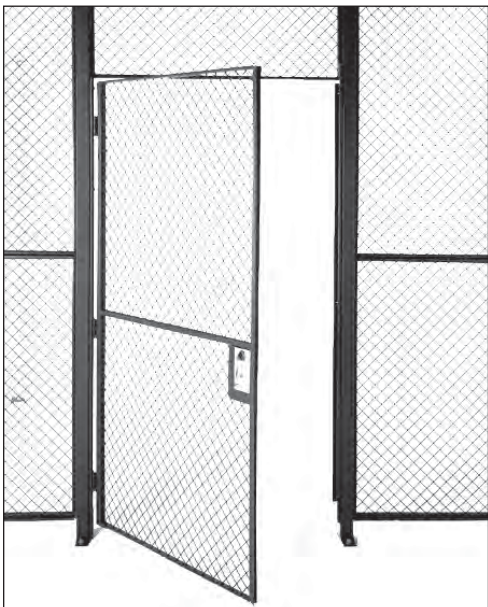
Constructed of wire mesh with an opening measuring 24" wide x 21" high. The window is equipped with slide bolts which can latch the window in either the opened or closed position. The fixed steel shelf measures 24" wide x 12" deep.



Drop Shelf Window

Opening measures 24" wide x 15" high. The window is hinged at the bottom and swings up to close.

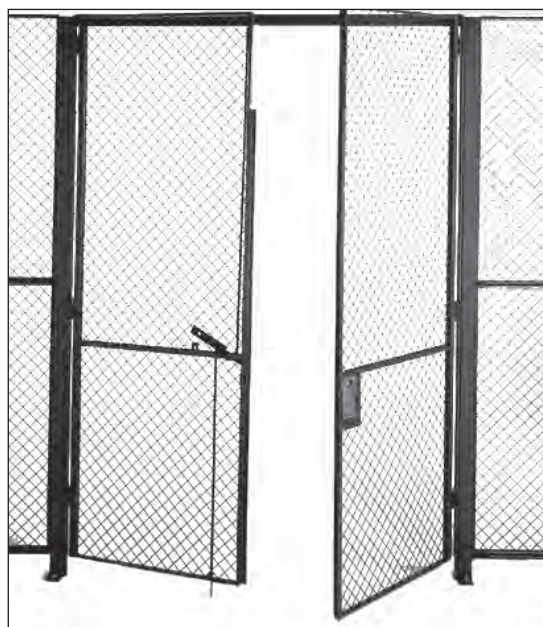
EZ Wire swing doors are functional and secure in a variety of styles with heavy duty hinges.



Single Swing Door

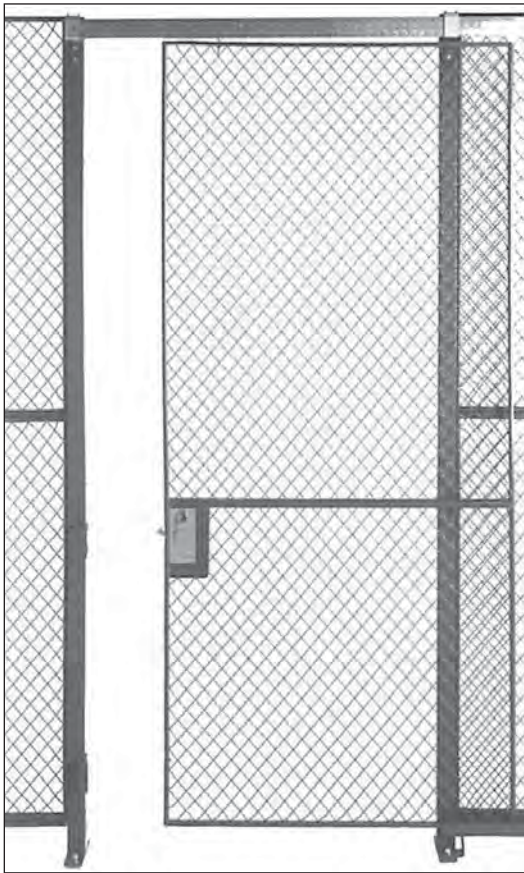
Available in widths of 3 and 4 feet with a height of 7 feet. If installed in a partition higher than 7 feet, a transom panel is included to fill the space above the door. Doors are reversible, and may be installed either left or right handed and may swing in or out.

Double Swing Door
Designed for opening widths of 6, 8 or 10 feet,
with heights of 7, 8, 9 and 10 feet.



Hinged Dutch Door

Available in widths of 3 or 4 feet with a height of 7 feet. If installed in a partition higher than 7 feet, a transom panel is included to fill the space above the door. Top and bottom sections are hinged separately. Door sections lock together for single door operation.



EZ Wire sliding doors may slide left or right and may be mounted either inside or outside of the partitioning.

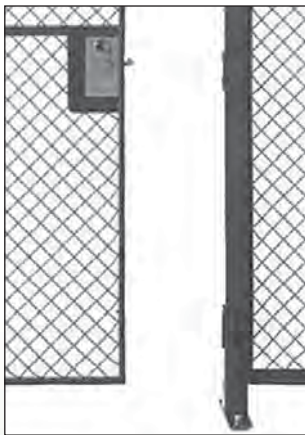
Single Sliding Door

Full height single sliding doors are available for the full height of stock partitions. Doors 6 feet or wider are shipped “knocked down” in 2 sections.

Lock Options

All doors have a bronze cylinder lock or a padlock attachment. Other optional locks include electric strikes, magnetic locks, card readers, hydraulic closers, keypad/pushbuttons, proximity locks, panic bars and interlocks. Please see page 8 for additional details.

DOOR DETAILS



Latch Receiver & Bottom Slam

Latch receiver & bottom slam mount directly onto post for security and convenience.



Hinge

Heavy duty hinge features permanently-installed pin swagged at both ends for added security.



Lock

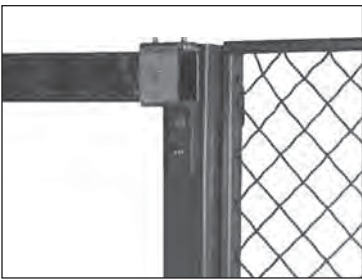
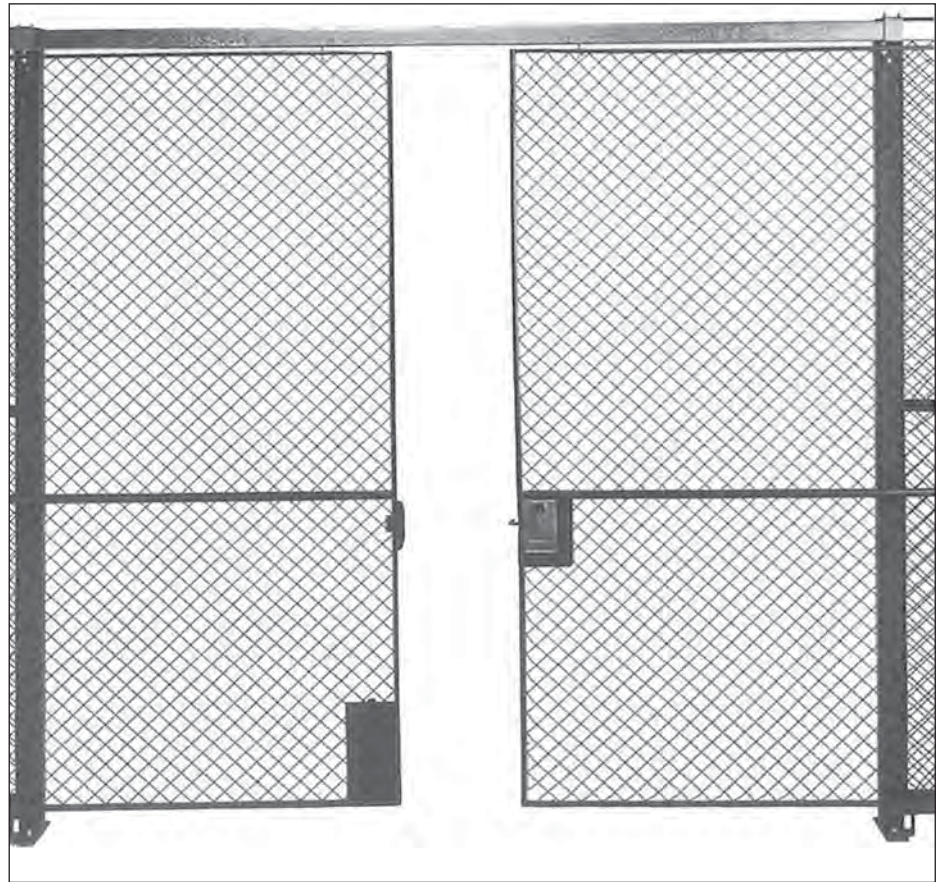
All doors have a bronze cylinder lock or a padlock attachment.

Double Sliding Doors

Full height double sliding doors are designed to accommodate widths from 6 to 10 feet, with overhead clearance up to partition height of 10 feet. Consult Husky Rack & Wire for special applications.

ALSO AVAILABLE

Sliding doors without overhead track above the door opening are available by mounting casters to bottom leading edge of the door.



Overhead Bracket

Bracket secures overhead track for single or double sliding doors.



4-Wheel Trolley

Trolley permits balanced movement and smooth operation.



Door Guide

Door guide is lagged securely to floor for continuous alignment.



Front view

Standard Door Lock
Key operated -
5 pin mortise cylinder

Key options:

- Keyed different - standard
- Keyed alike - optional
- Keyed different/master keyed - optional



Rear view

Standard Door Lock
Reverse side - standard
hex knob



Rear view

Standard Door Lock
Reverse side -
optional lever handle



Front view

Best Cylinder

7 pin interchangeable
core mortise cylinder -
shipped less core
end user provides core
and site keying
Note: any standard IC
mortise cylinder can be
adapted to this lockset.



Front view

Thumbturn Cylinder

Thumbturn cylinder
operates the lock
without a key, allowing
unsecured access.



Mechanical Pushbutton Lockset

For use with hinged doors



Front view

Rear view

I03 IADA Double Lever Handle Lock for Hinged Door
Key operated with privacy knob in rear handle



Front view

Rear view

I03 IADA-D Double Lever Handle Lock for Hinged Door
"Dummy" cylinder allows unsecured access



Outside Key Control
for push bar exit device



Electromagnetic Lockset
for slide door



Electric Strike
for hinged door mounts
in 2" square tube post



Push Bar Exit Device

● PANELS

Stock panels are manufactured in even widths of 1 ft - 10 ft and in heights of 1 ft - 5 ft. The panels are installed stacking one panel over another using special welded connectors on each panel. The horizontal connection between panels is accomplished without bolting, by overlapping the lower panel's upper framing channel with the upper panel's attached overchannel. Each panel is attached to tubular line posts without bolts using connectors accessible from the inside of the enclosure only. Each panel has connectors welded to the vertical framing members which engage slots punched in the line posts.

● FRAME

Vertical and horizontal members are 1-1/4" x 5/8" 14 gauge "c" channels with uniformly spaced holes for inserting woven wire. Vertical and horizontal members are mortised and tenoned at corners.

● WIRE MESH

Wire mesh is made of 10 gauge triple crimped wire and is securely clinched into the vertical and horizontal frames. Wire is woven into a 1-1/2" pattern with the wires intersecting the channel frames at a 45 degree angle.

● SWEEP SPACE

There is a 3-1/2" sweep space between the bottom horizontal bar and floor level.

● FINISH

Panels, doors and line posts are painted with one coat of high gloss machinery enamel. Some hardware items may be zinc plated.

● HARDWARE

Hardware (including masonry lag bolts) required for installation are included.

● OVERCHANNEL

A 1-1/2" x 1 1/16" 14 gauge channel is attached to one horizontal framing member of each panel. This channel is attached using self tapping screws with the opening of the channel facing out. These channels may be demounted if necessary.

● CORNER POSTS

Special tubular corner posts are fabricated from 14 gauge steel. The length of the post will equal the overall height of the assembled partitions. Slots are punched in the corner posts to allow boltless installation. Posts have pads welded to one end for attachment to the floor.

● LINE POSTS

2-1/2" square 14 gauge tubular posts are universally punched with slots and holes for mounting all types of panels and doors.

● DOOR CONSTRUCTION

Doors are constructed of similar materials to match the panels. Door frames are covered with rolled steel channels where necessary. Each sliding door has (two) four wheel adjustable trolleys traveling in an enclosed overhead track. The door bottom is guided by a U-shaped floor guide. Each hinged door has three fixed butt hinges and a jamb bar.

● LOCKS

Each door is shipped with a bronze cylinder lock. The lock contains a 5-pin cylinder (1" standard) which may be master-keyed and keyed alike. A padlock attachment is also available.

● EXTRA PARTITIONING HEIGHT

Installations requiring heights up to 40 ft. may be assembled by stacking partitions. 2-1/2" square tubing posts are installed between the partitions to join them together from floor to ceiling. A 2-1/2" x 7-1/2" pad is welded to the post for lagging to the floor. Bracing against ceiling joists, building columns or other means is required for installations over 20 ft.

Installations in excess of 40 ft. in height and those where overhead bracing is not possible may require special design. Contact Husky Rack & Wire for engineering assistance.

Husky Rack & Wire makes continuous improvements to all of its products. We reserve the right to change specifications without notice. Photos and illustrations may contain standard and optional equipment.

Warranty Information

For warranty information applicable to all our products, please refer to the Husky Rack & Wire Terms and Conditions of Sale, which are accessible at www.huskyrackandwire.com/terms_and_conditions.html



EZ WIRE® ORDER INFORMATION

- Fill in requested information.
- Make a simple sketch of area to be partitioned (be sure to include doors and windows) and check desired styles and options.
- Fax order form to us at 704.483.1911 or email to productinfo@huskyrackandwire.com

Name: _____ Title: _____

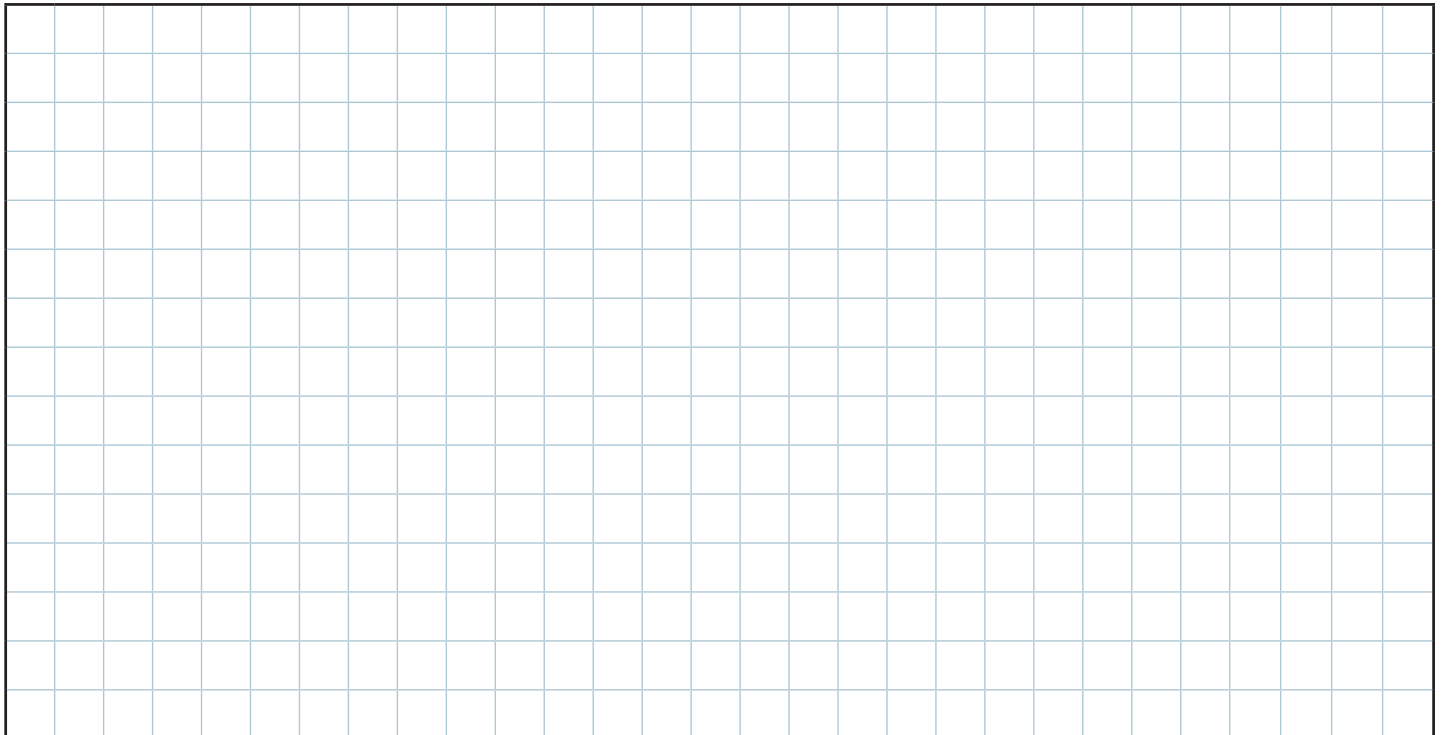
Company: _____

Address: _____

Phone # _____ Fax # _____

I'm ready to buy, contact me at once. I need an estimate. I have special design needs.

SKETCH AREA



Please notate existing walls and obstructions

DOORS

- single hinge double slide
 double hinge dutch door
 single slide

WINDOWS

- drop shelf
 slide up
 I need a ceiling

LOCKS

- bronze cylinder lock
 padlock attachment
 other



6146 Denver Industrial Park Road
Denver, NC 28037

Phone 800-438-5629

Fax 704-483-1900

www.huskyrackandwire.com